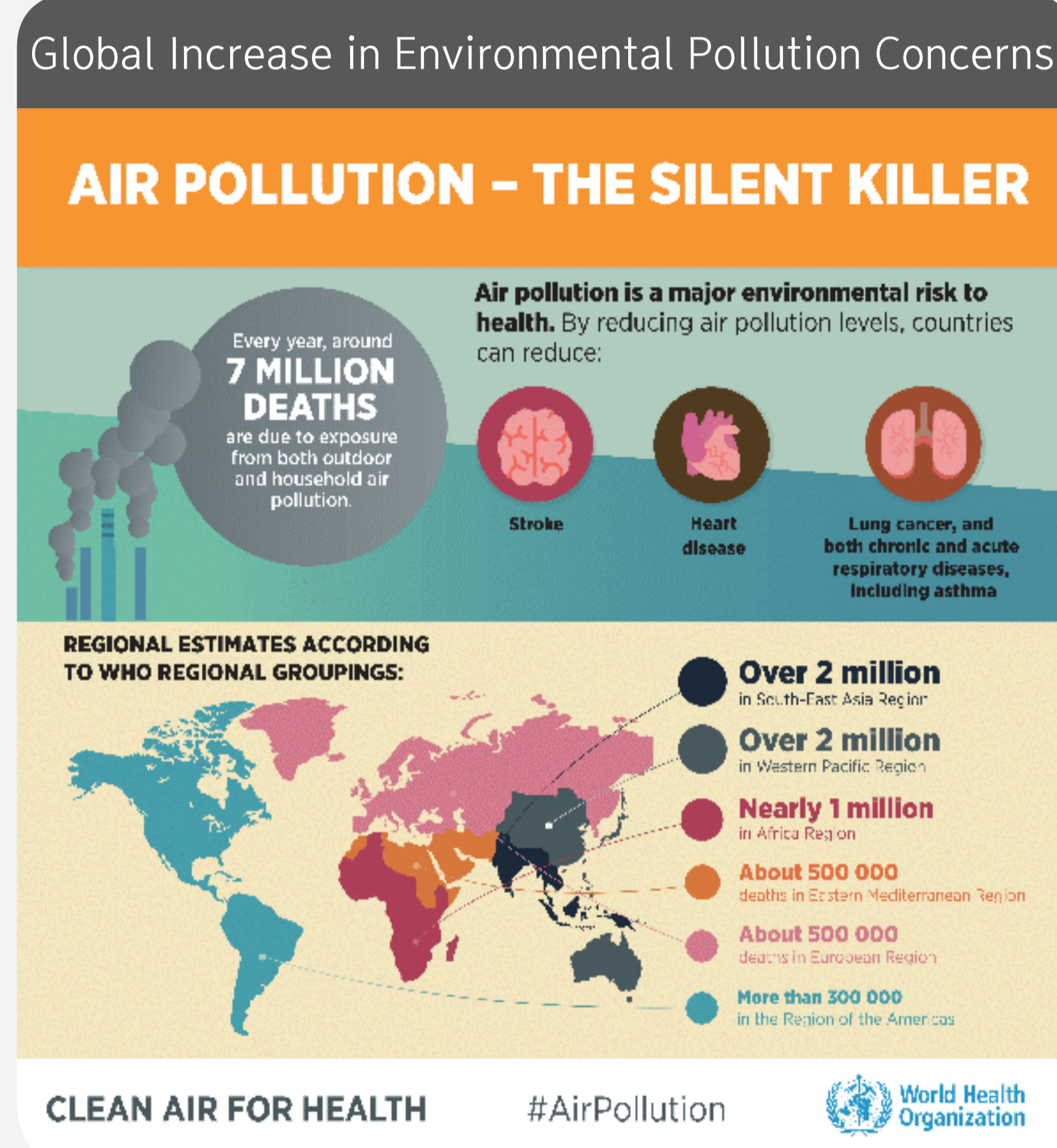


Recycled Cold Stabilization Base Course Asphalt Paving Mixtures



Need for Technology Development and Government Policies in South Korea



✓ Air Pollution Causes 7 Million Premature Deaths Annually

- Focus on Public Health Threats from Pollution Sources in Industrial Sites
- Release of Air Quality Guidelines for Particulate Matter and Nitrogen Dioxide

Establishing a Green Industry Innovation Ecosystem

Fostering Promising Green Companies
Development of Low-Carbon and Green Industrial Complexes
Investment in Pollution Prevention Facilities
Support for Smart Eco-Friendly Factories and Clean Factories

South Korea's Efforts Towards Carbon Neutrality



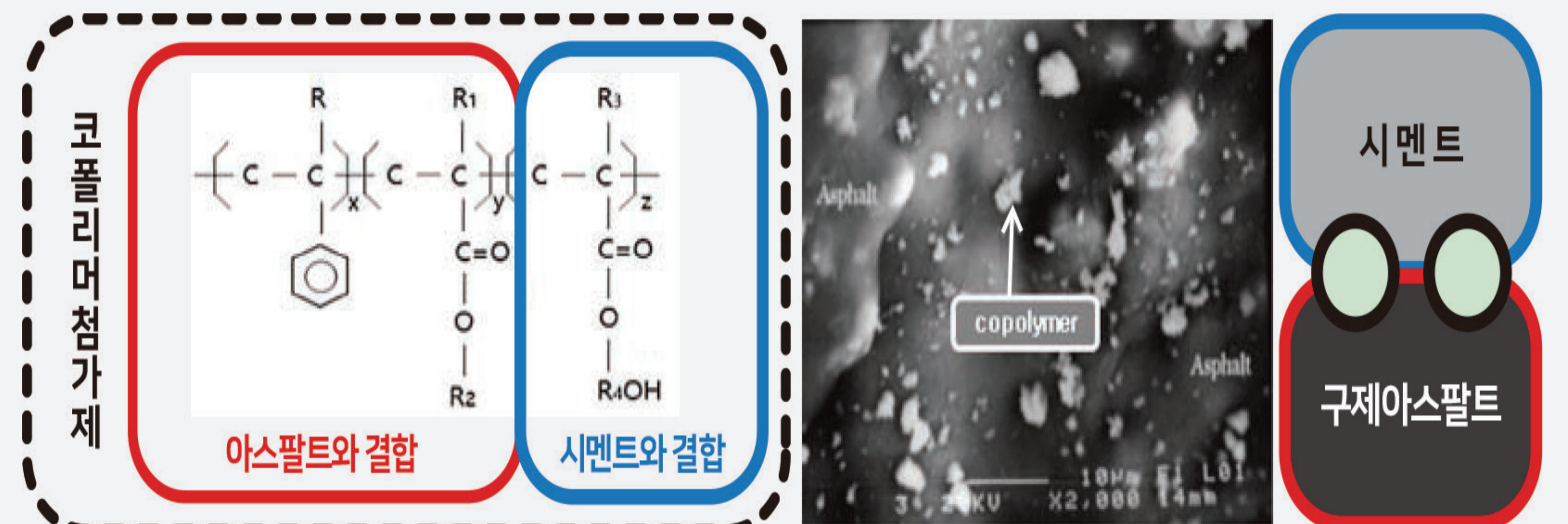
대통령 직속 2050
탄소중립 녹색성장 위원회
Presidential Commission on
Carbon Neutrality and Green Growth

Product Definition



By using 100% recycled aggregates for asphalt concrete, we enhance the recycling rate of waste asphalt. This innovative road base material, produced at ambient temperatures by mixing cement and copolymer additives, results in zero carbon emissions during the production process, making it an environmentally friendly, low-carbon green product.

Copolymer Additives



The copolymer additive is a dual-functional agent with hydrophobic properties that bind with reclaimed asphalt in the recycled aggregates, and hydrophilic properties that bind with cement.

Environmental Benefits of Recycled Cold Stabilization Base Course Asphalt Paving Mixtures

Hot Mix Asphalt Paving Mixture

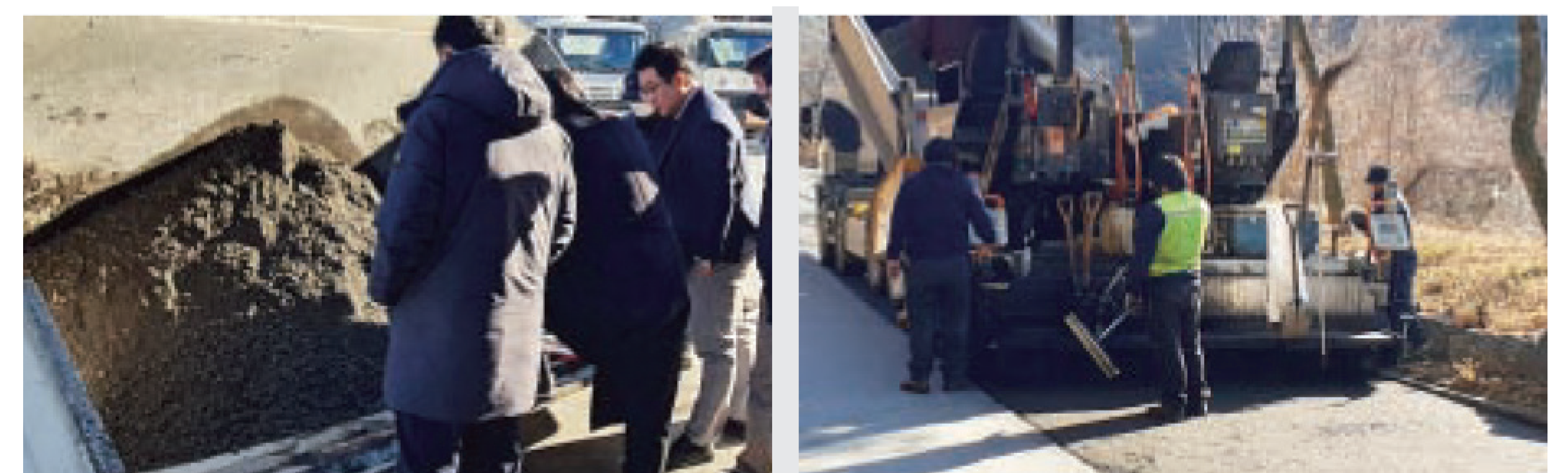


Product Manufacturing

Paving and Construction

- High Temperature Heating Leading to High Emissions of Carbon and Air Pollutants
- Vulnerability of Worker Safety and Risk of Burns in High-Temperature Environments
- Production and Construction: High-Temperature Range of 160°C to 170°C

Recycled Cold Stabilization Base Course Asphalt Paving Mixtures



Product Manufacturing

Paving and Construction

- Zero Carbon and Air Pollutant Emissions During Construction with Non-Heated Production
- Improving Worker Safety and Preventing Accidents in the Work Environment